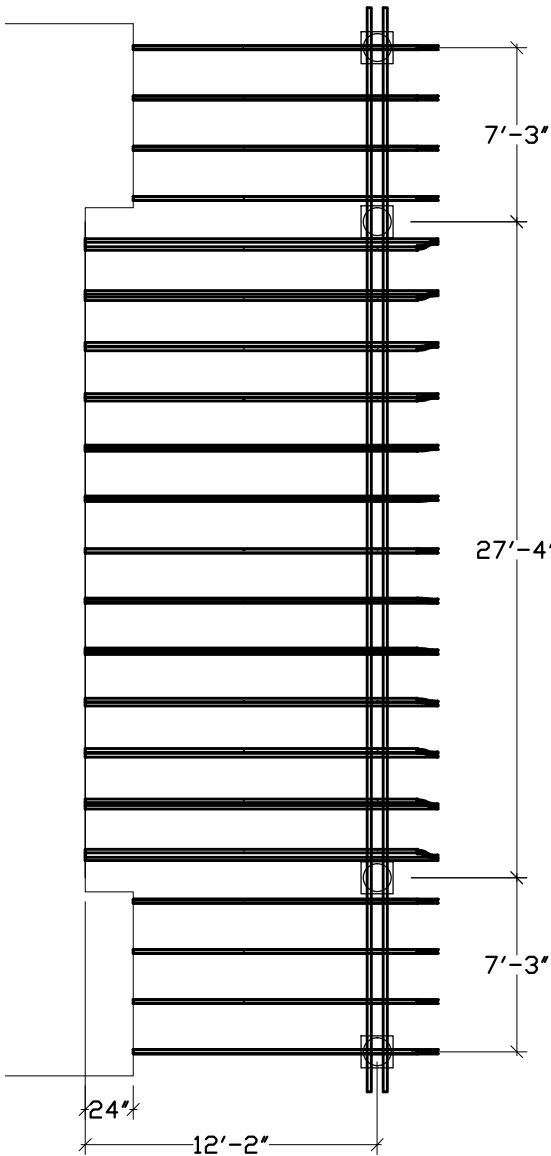


**CUSTOM PVC PERGOLA**

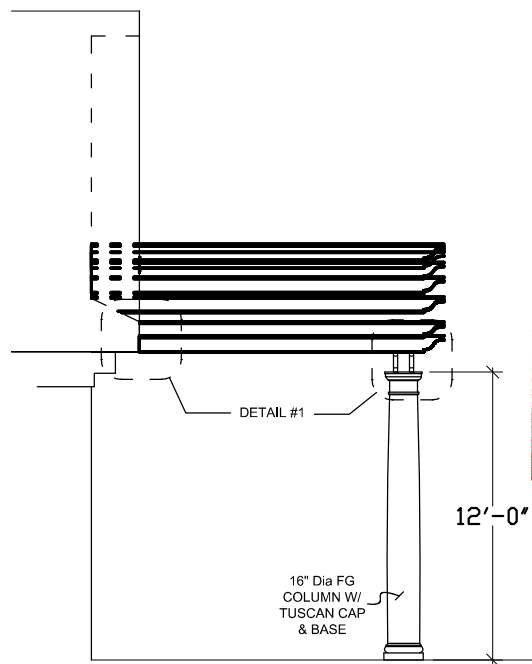
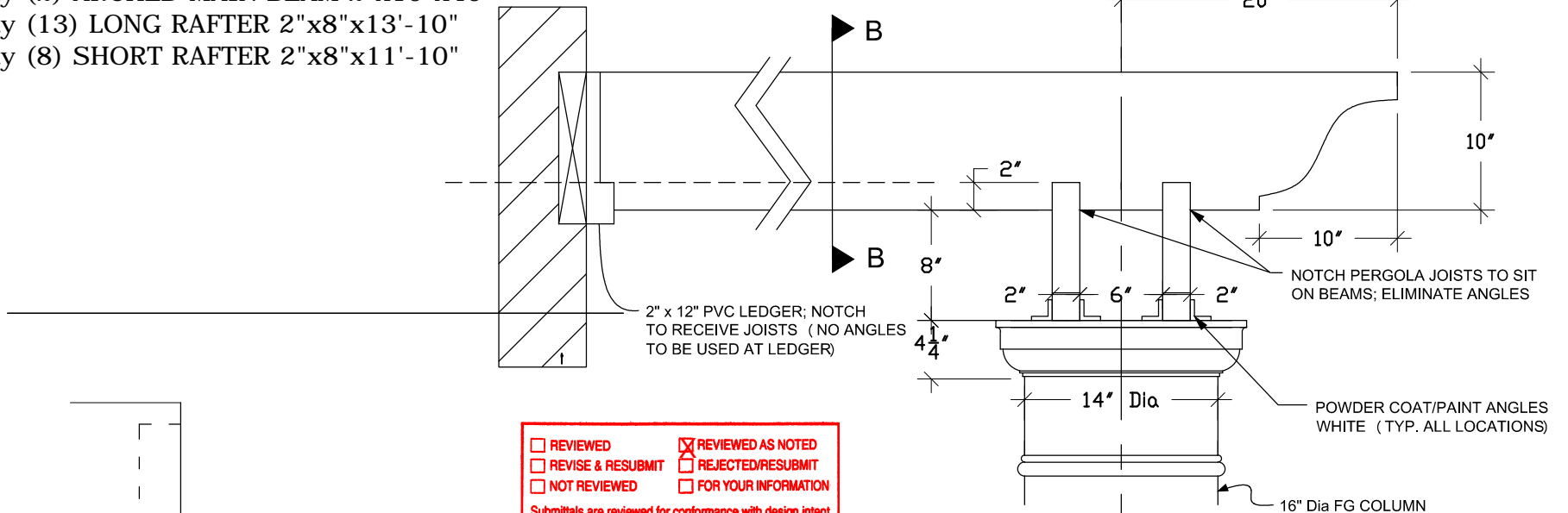
- Qty (4) FIBER GLASS COLUMN 16"Dia x 12'-0"
- Qty (2) ARCHED MAIN BEAM 2"x10"x46'
- Qty (13) LONG RAFTER 2"x8"x13'-10"
- Qty (8) SHORT RAFTER 2"x8"x11'-10"

**DETAIL #1**

1" = 1'-0"



**FLOOR PLAN**  
1/8" = 1'-0"



**SIDE VIEW A**  
1/8" = 1'-0"

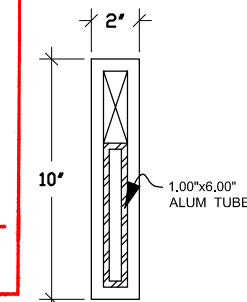
<input type="checkbox"/> REVIEWED	<input checked="" type="checkbox"/> REVIEWED AS NOTED
<input type="checkbox"/> REVISE & RESUBMIT	<input type="checkbox"/> REJECTED/RESUBMIT
<input type="checkbox"/> NOT REVIEWED	<input type="checkbox"/> FOR YOUR INFORMATION

Submittals are reviewed for conformance with design intent and general compliance with the Contract Documents only. Notations Do Not Authorize Changes to Contract Sum.

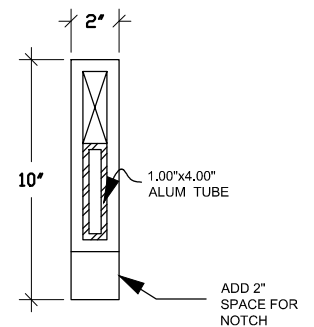
Comments and/or corrections do not relieve the Contractor from compliance with the Contract Documents. The Contractor is responsible for confirming and correlating all quantities, dimensions, tolerances, clearances, fabrication processes, techniques and sequences of construction, compatibility of materials and methods, coordination of their work with other trades and subcontractors, performance for work in a safe and satisfactory manner and for full compliance with the Contract.

**10/08/18**      **SMC**  
DATE                      REVIEWED BY

**Harrison French & Associates**



**SECT A/A**  
1-1/2" = 1'-0"



**SECT B/B**  
1-1/2" = 1'-0"



JOB: CUMBERLAND FARMS

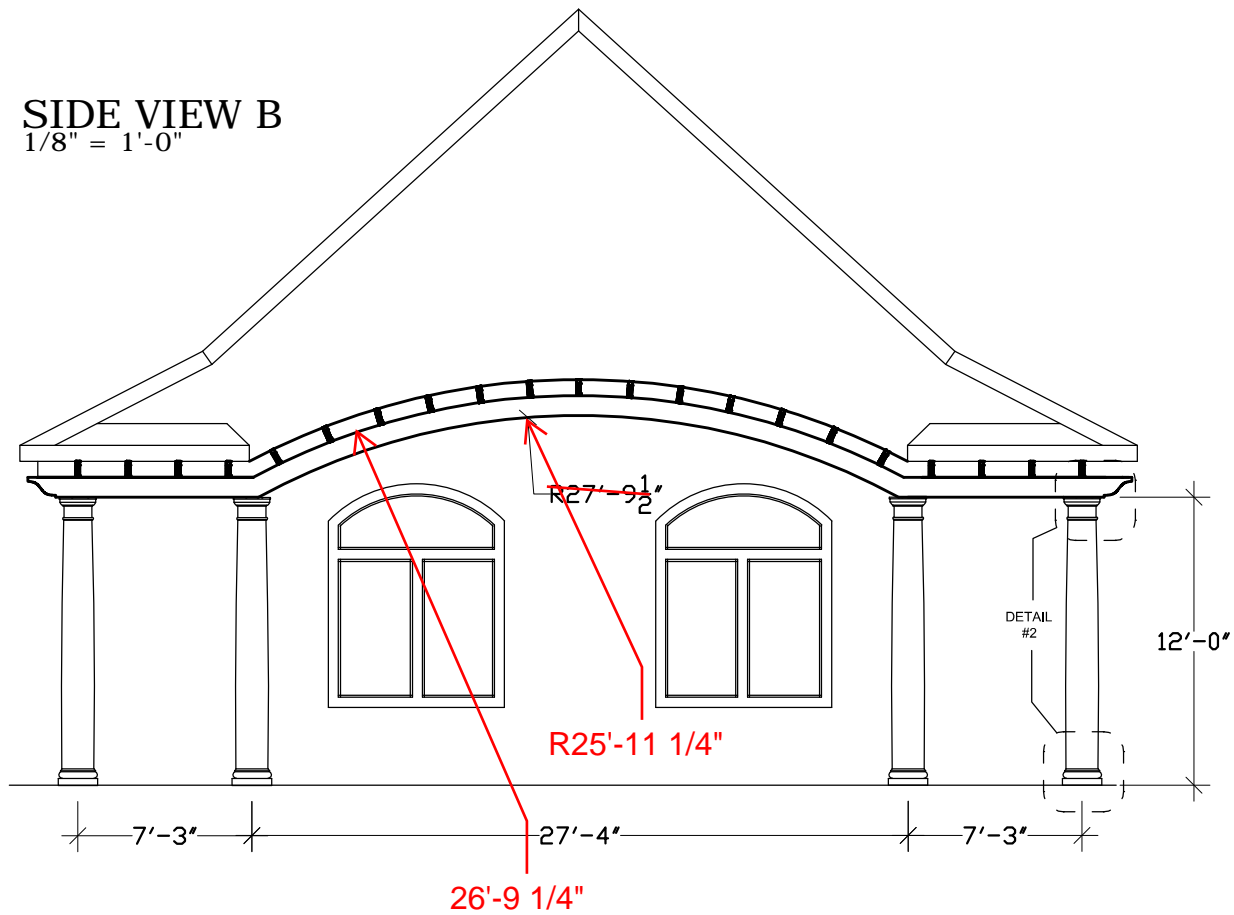
SHEET NO. 1 OF 3

CALCULATED BY: \_\_\_\_\_ DATE \_\_\_\_\_

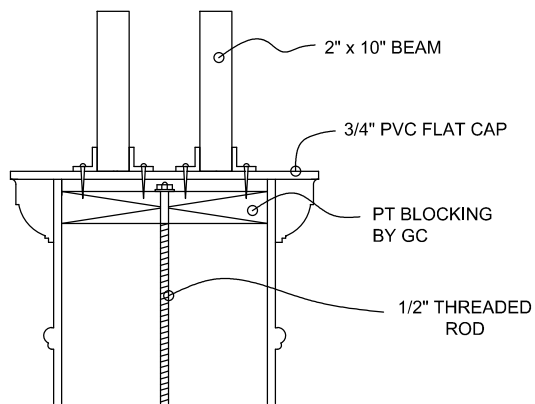
CHECKED BY: \_\_\_\_\_ DATE \_\_\_\_\_

SCALE: \_\_\_\_\_

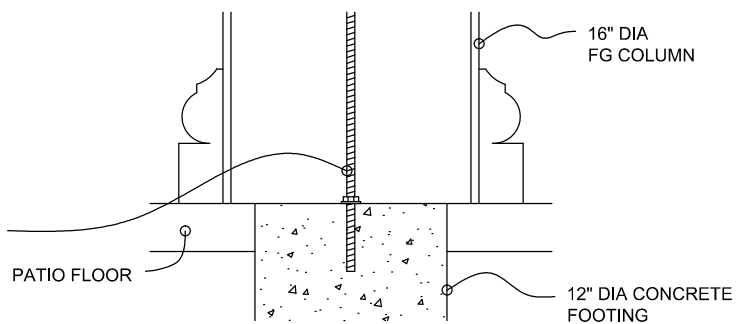
**SIDE VIEW B**  
1/8" = 1'-0"



**DETAIL A. 1**  
1" = 1'-0"

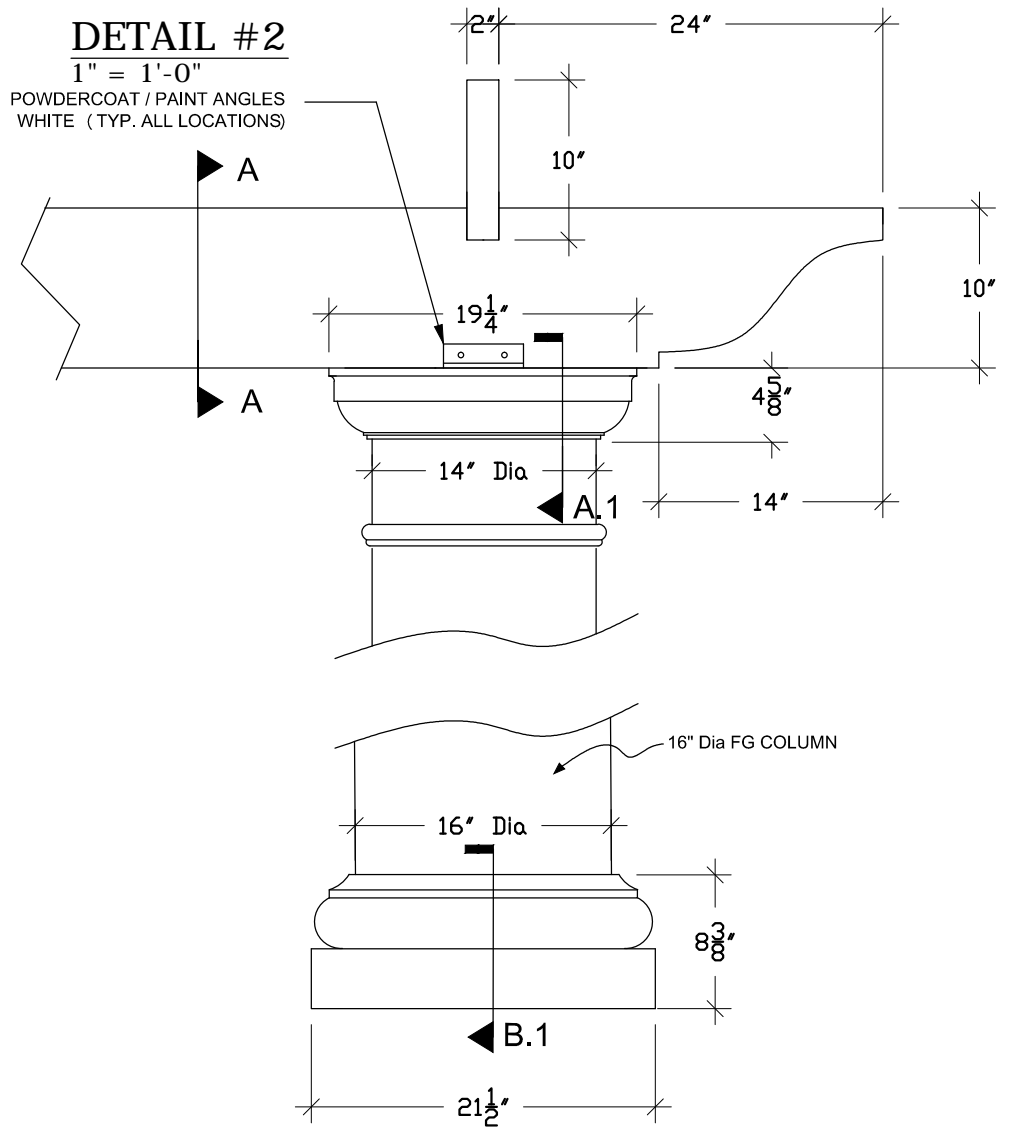


**DETAIL B. 1**  
1" = 1'-0"



**DETAIL #2**

1" = 1'-0"  
POWDERCOAT / PAINT ANGLES  
WHITE (TYP. ALL LOCATIONS)



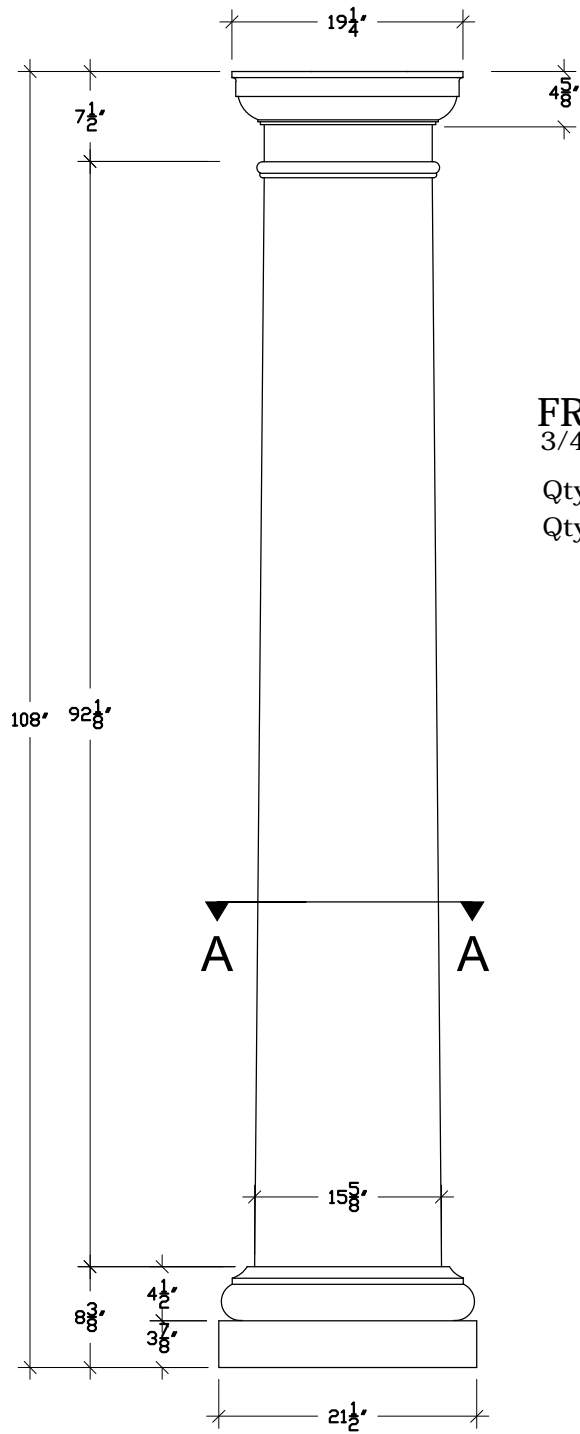
JOB: CUMBERLAND FARMS

SHEET NO. 2 OF 3

CALCULATED BY: \_\_\_\_\_ DATE \_\_\_\_\_

CHECKED BY: \_\_\_\_\_ DATE \_\_\_\_\_

SCALE: \_\_\_\_\_

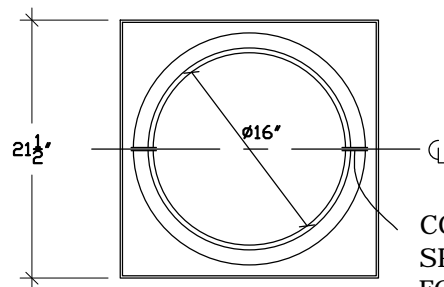


**FRP COLUMN ELEVATION**

3/4" = 1'-0"

Qty (3) Split Vertically for Field Assembly

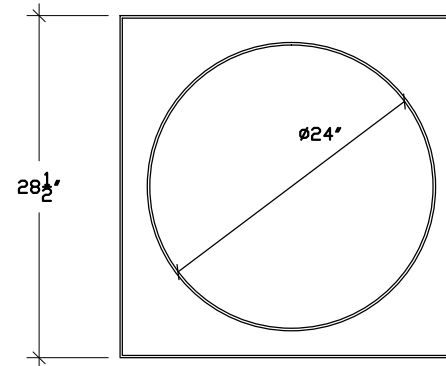
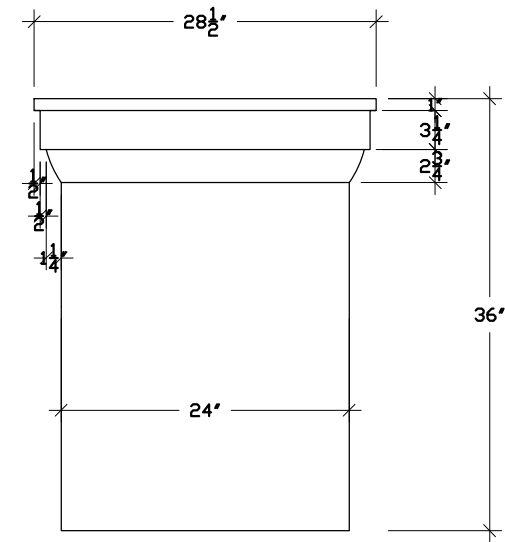
Qty (2) Full Round



**SECTION A-A**

3/4" = 1'-0"

COLUMNS TO BE  
SPLIT VERTICALLY  
FOR RE-ASSEMBLY



**FRP INTERIOR COLUMN ELEVATION**

3/4" = 1'-0"

FULL ROUND COLUMNS  
TO BE SPLIT BY OTHERS

QTY (5) INTERIOR COLUMNS



JOB: CUMBERLAND FARMS

SHEET NO. 3 OF 3

CALCULATED BY: \_\_\_\_\_ DATE \_\_\_\_\_

CHECKED BY: \_\_\_\_\_ DATE \_\_\_\_\_

SCALE: \_\_\_\_\_